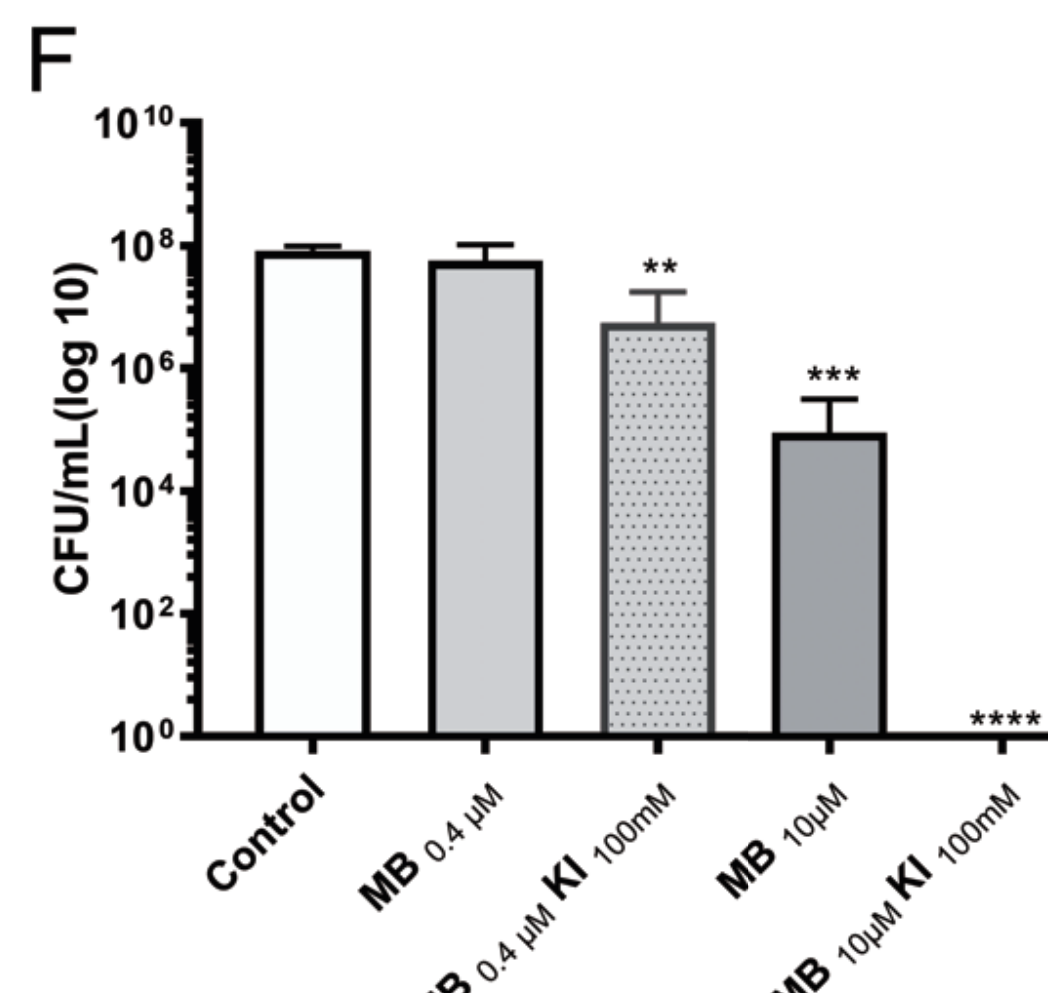
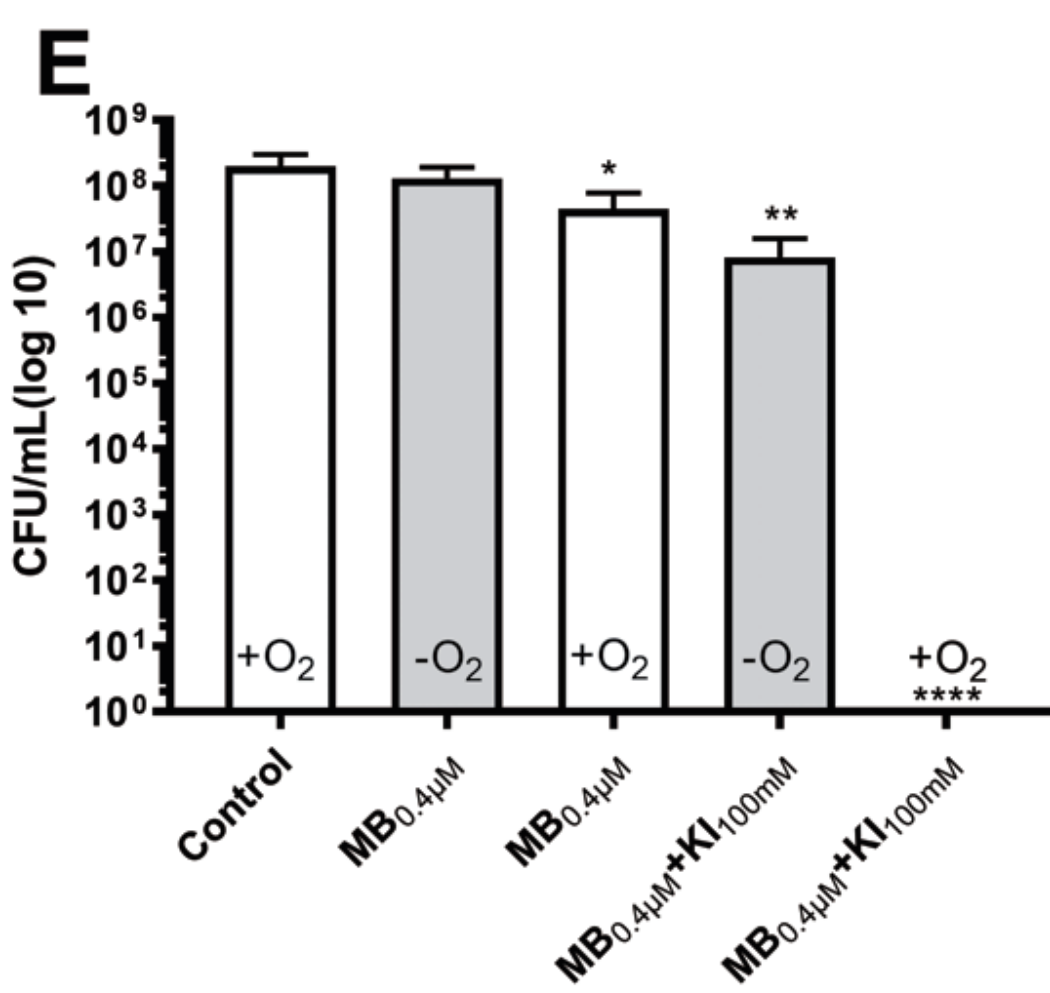
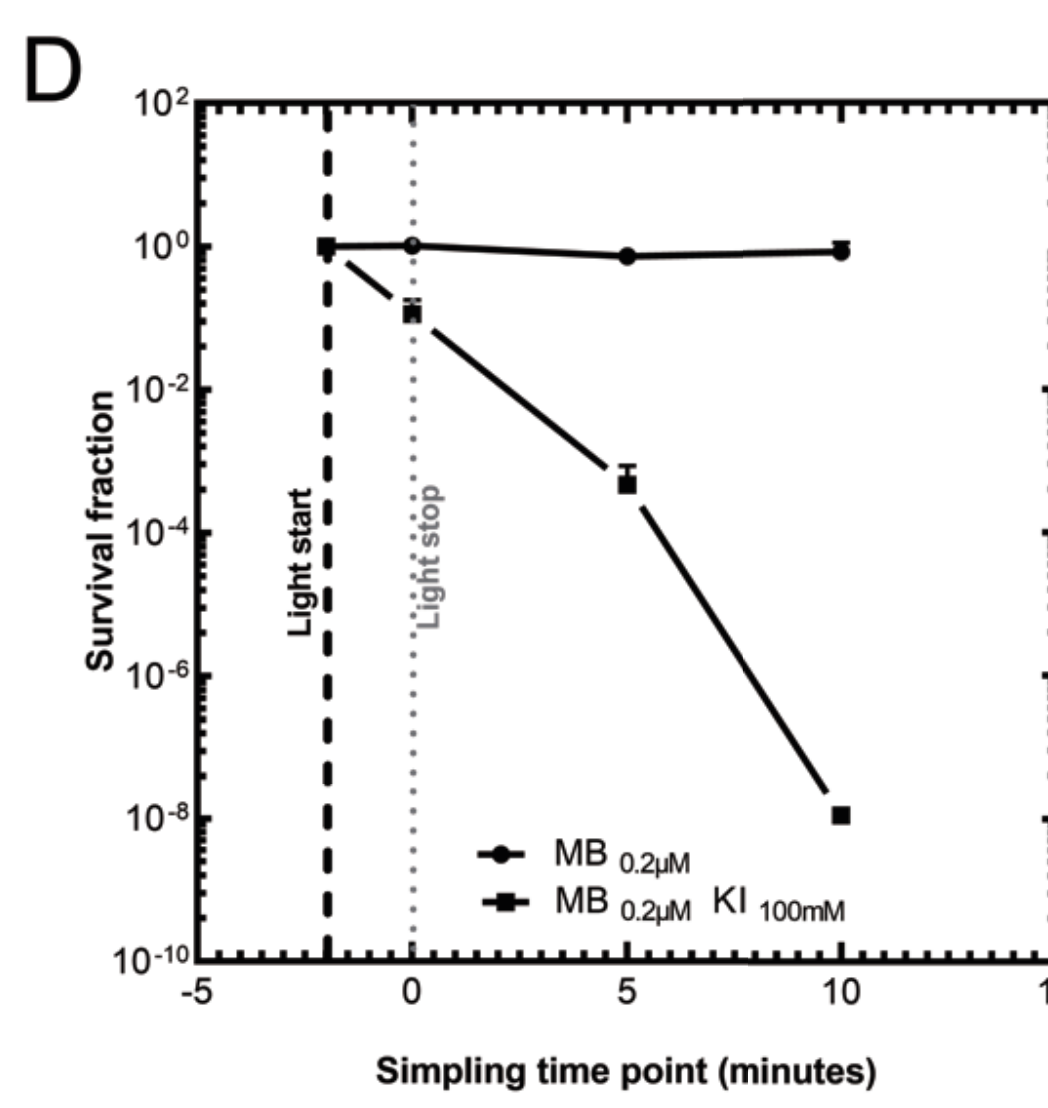
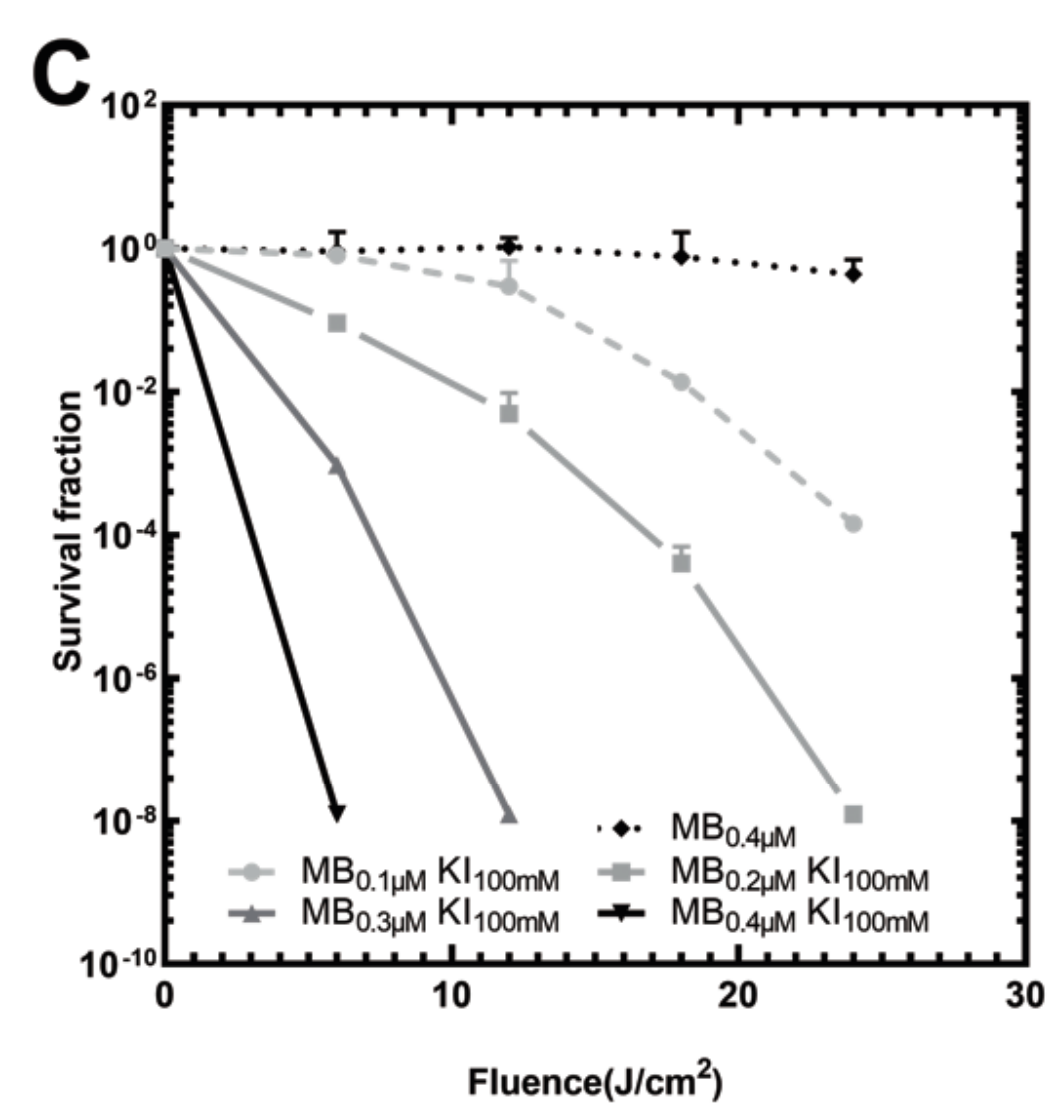
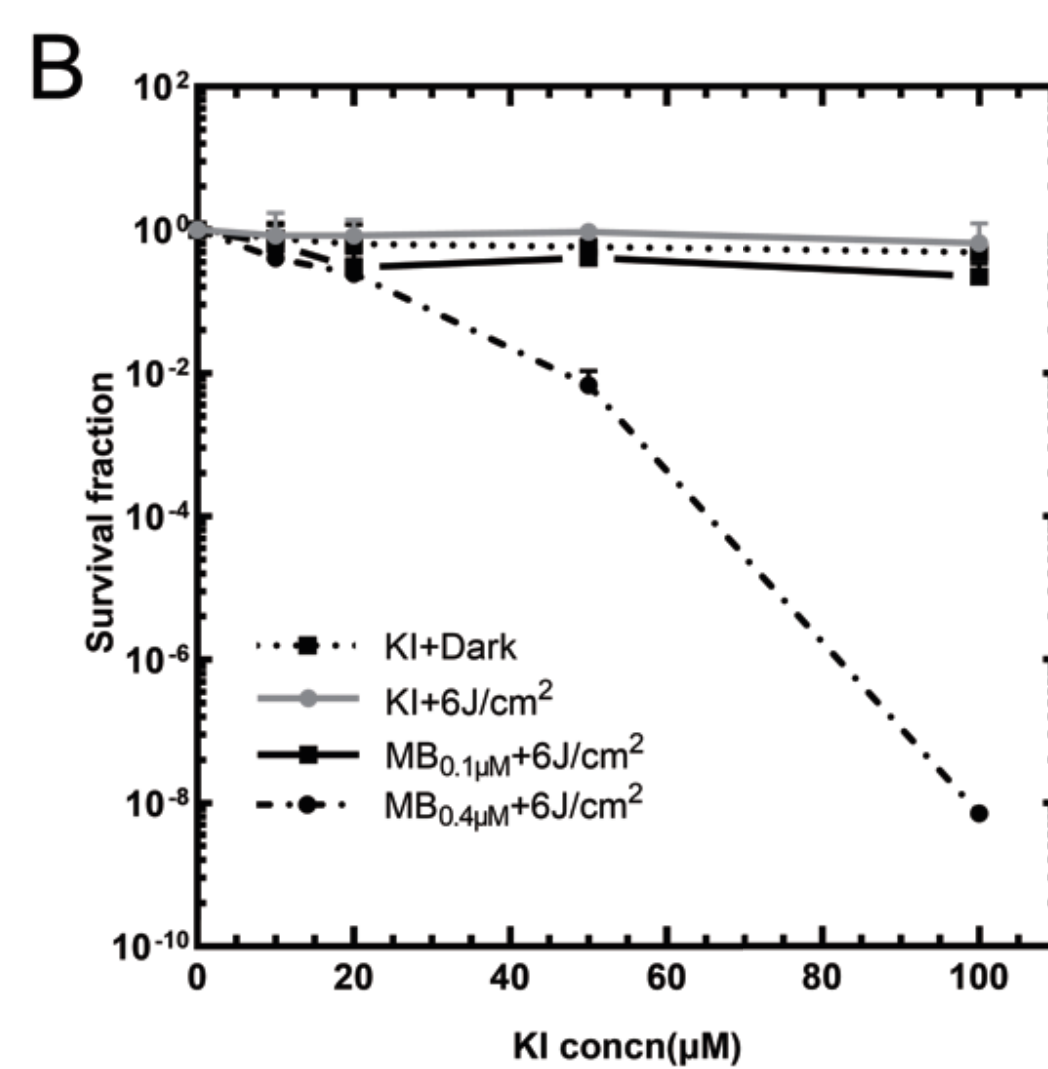
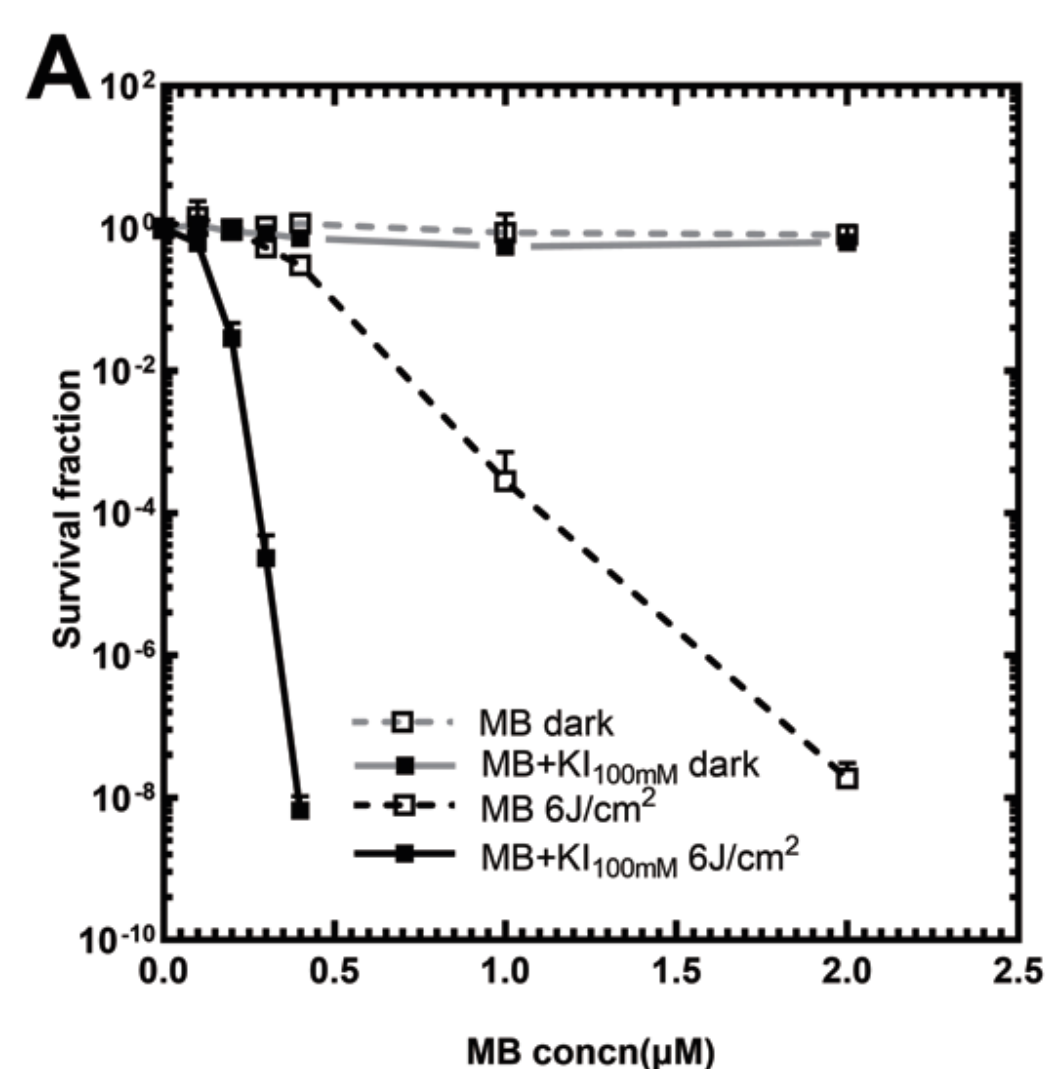
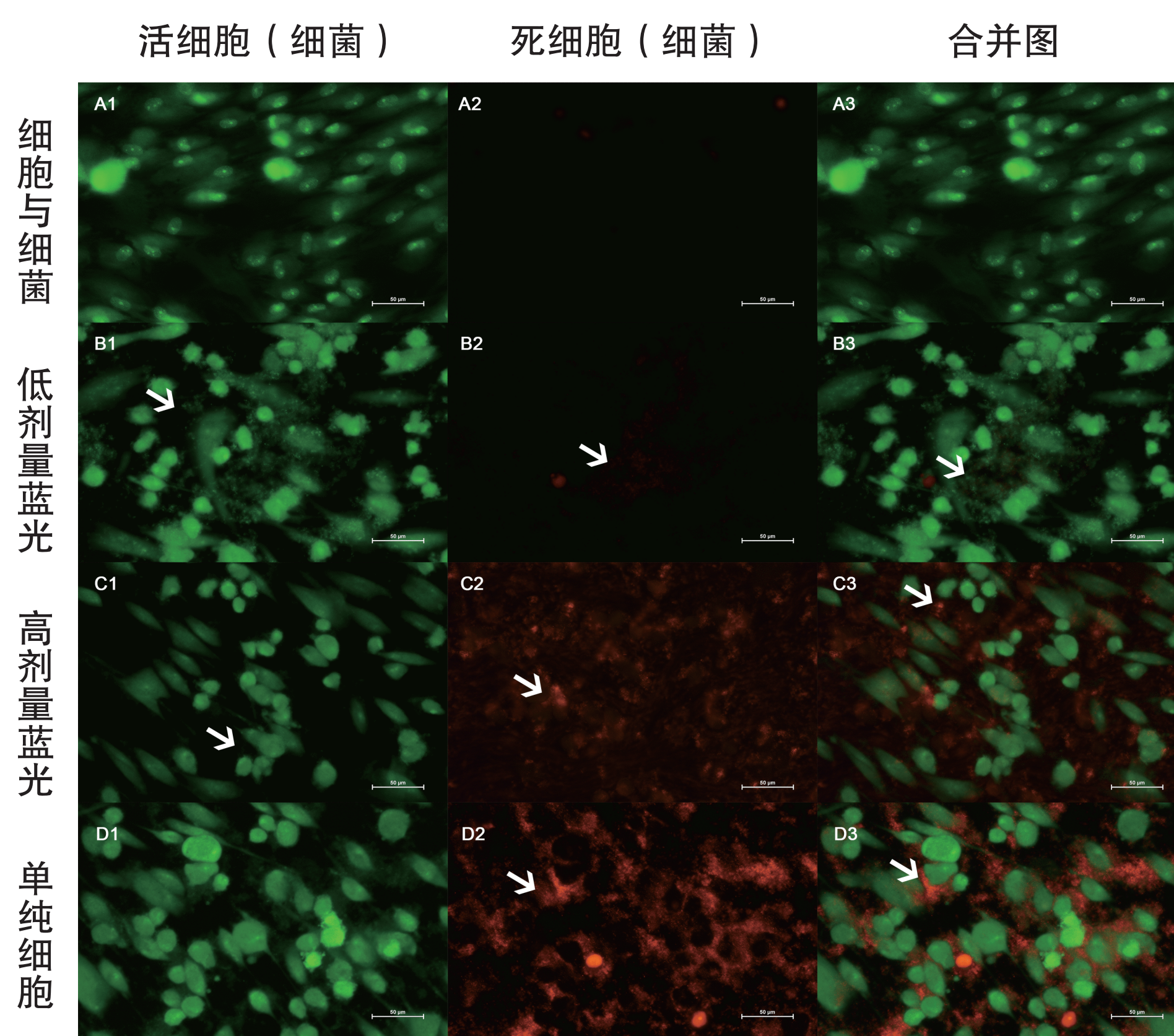


蓝光和增强型光动力治疗种植体周围感染

Blue light and enhanced photodynamic therapy for peri-implant infections

种植体周围炎感染常规使用手动清创、消毒剂、抗生素进行治疗，但存在磨损种植体、可能的皮肤过敏和耐药性等问题。课题组研究表明，蓝光和光动力疗法是一种对人体毒性更低、对种植体破坏更小，对的感染病原体杀灭效果较好的非侵入式治疗方式。



KI 增强光动力的杀灭效果