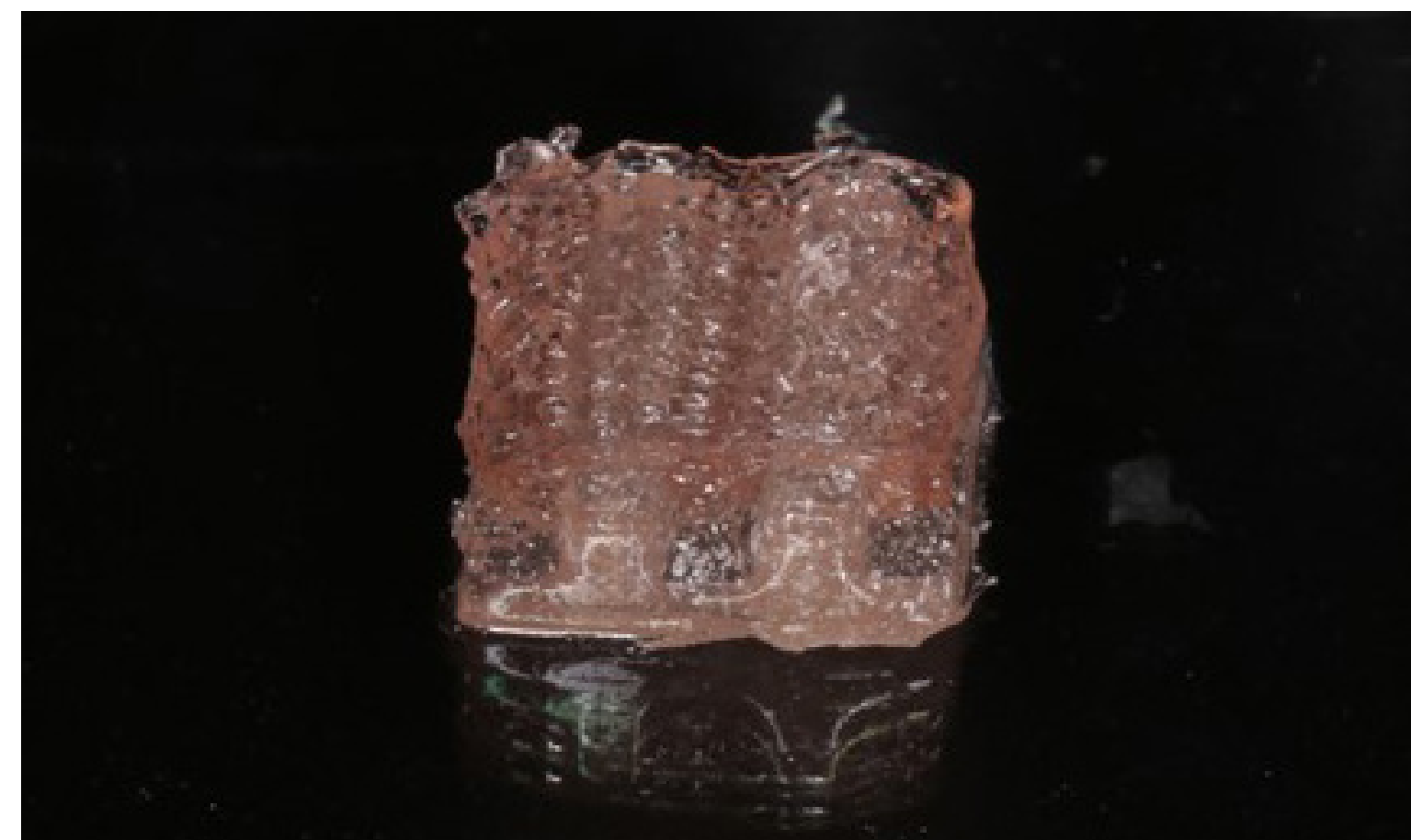
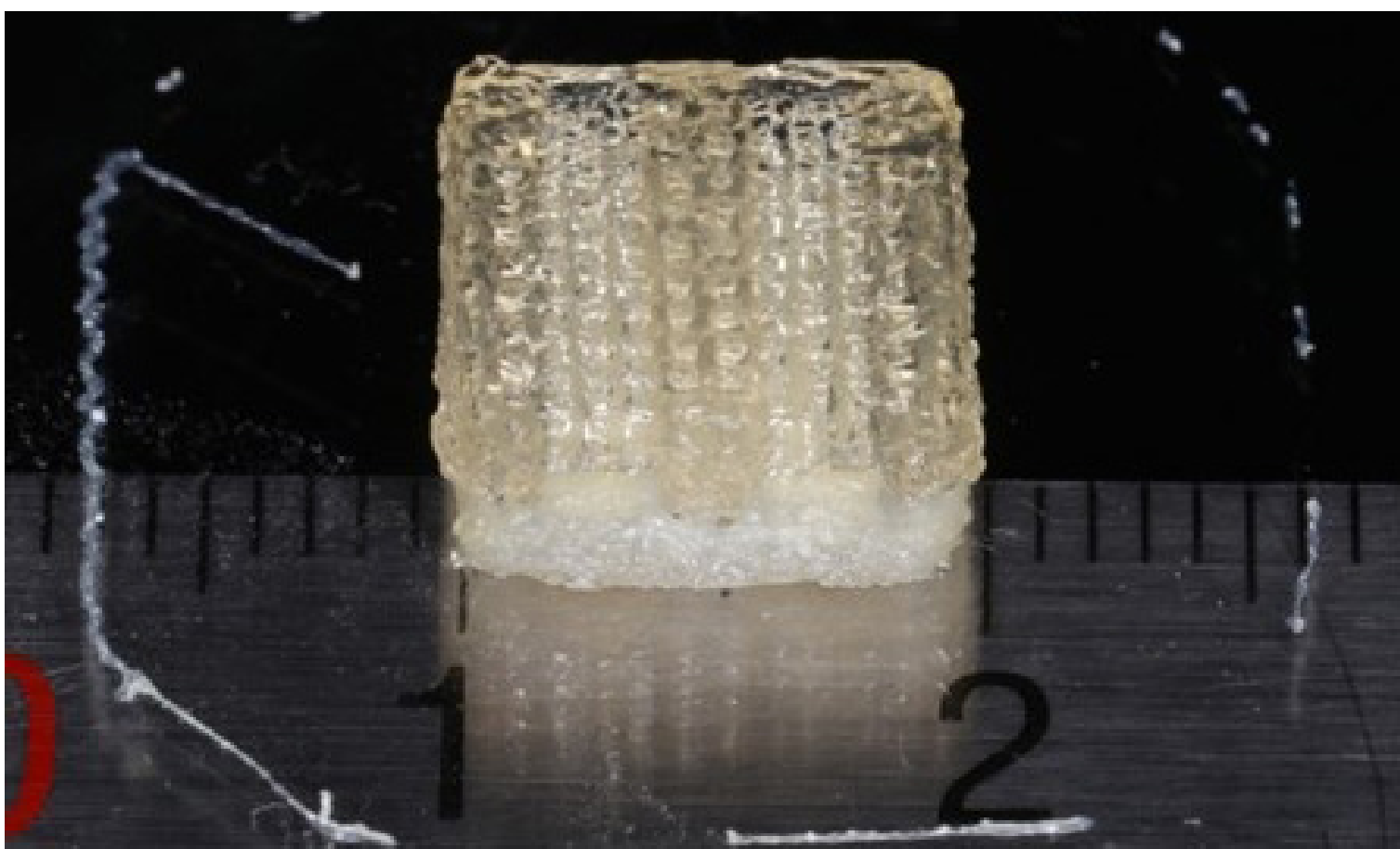


生物细胞打印

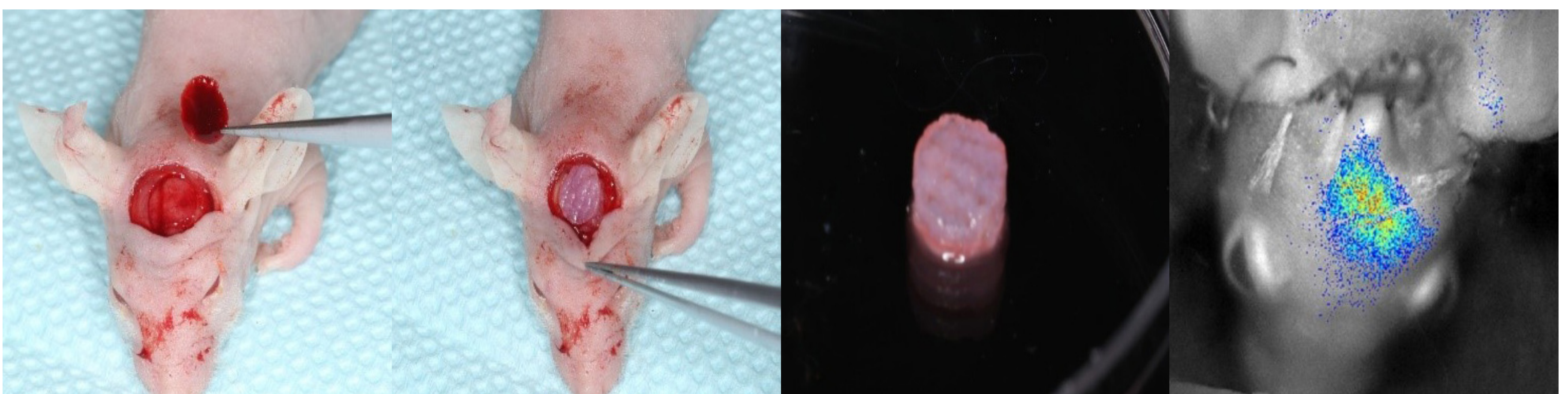
生物细胞打印设备具有多成型喷头控制系统，喷头采用高精度直列式分布，且同步切换控制。打印喷头六个，包括低温气动螺杆式喷头（2套）、高温气动螺杆式喷头（1个）、高温气动直通喷头（1个）、气动螺杆UV喷头（1个）和热泡式喷墨打印头（1个），可完成 -20°C ~ 300°C 温度范围的生物材料的熔融打印，以及低粘度（20cps）细胞悬液到高粘度（20000cps）生物材料的打印。

Medprin 3D bio-printer

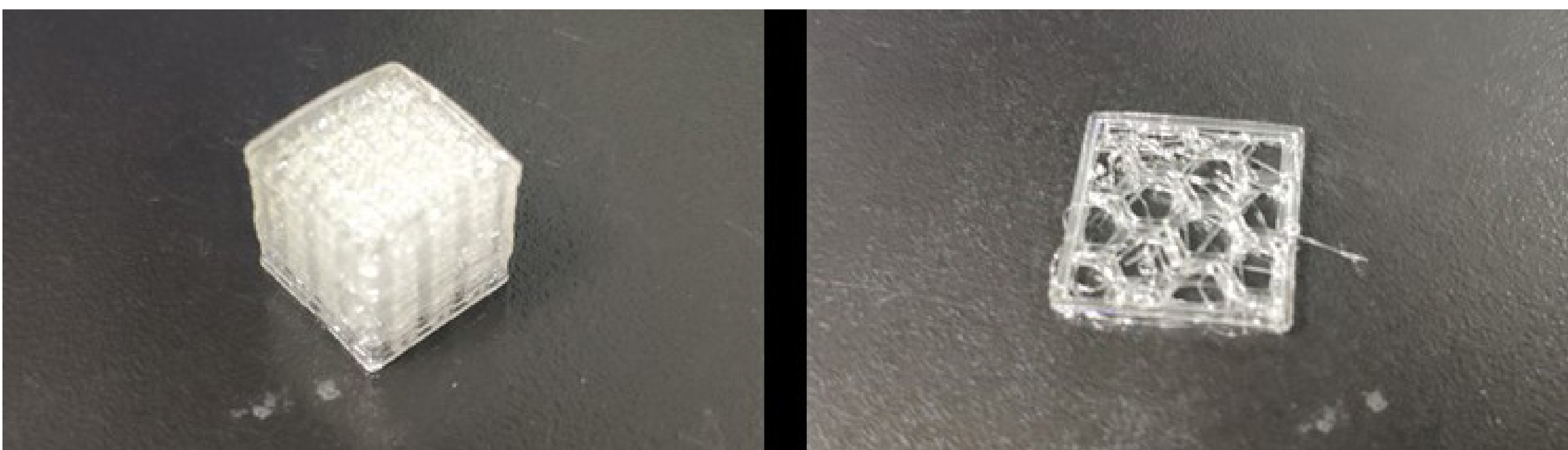
Medprin 3D bio-printer (China) has multiple nozzle control system with high-precision distribution and synchronous switching. Six print heads, including pneumatic screw nozzle (2 sets) at low temperature, high temperature pneumatic screw nozzle (1), high temperature air pressure nozzle (1), pneumatic screw UV nozzle (1) and inkjet print head (1). Printing can be completed from -20°C to 300°C temperature, and from low viscosity (20CPS) cell suspension to high viscosity (20000 CPS) biological materials.



体外构建生物打印牙龈 - 骨复合体



体内生物打印牙龈 - 骨复合体的生物性的研究



高温 + 低温双喷头共同打印的研究